

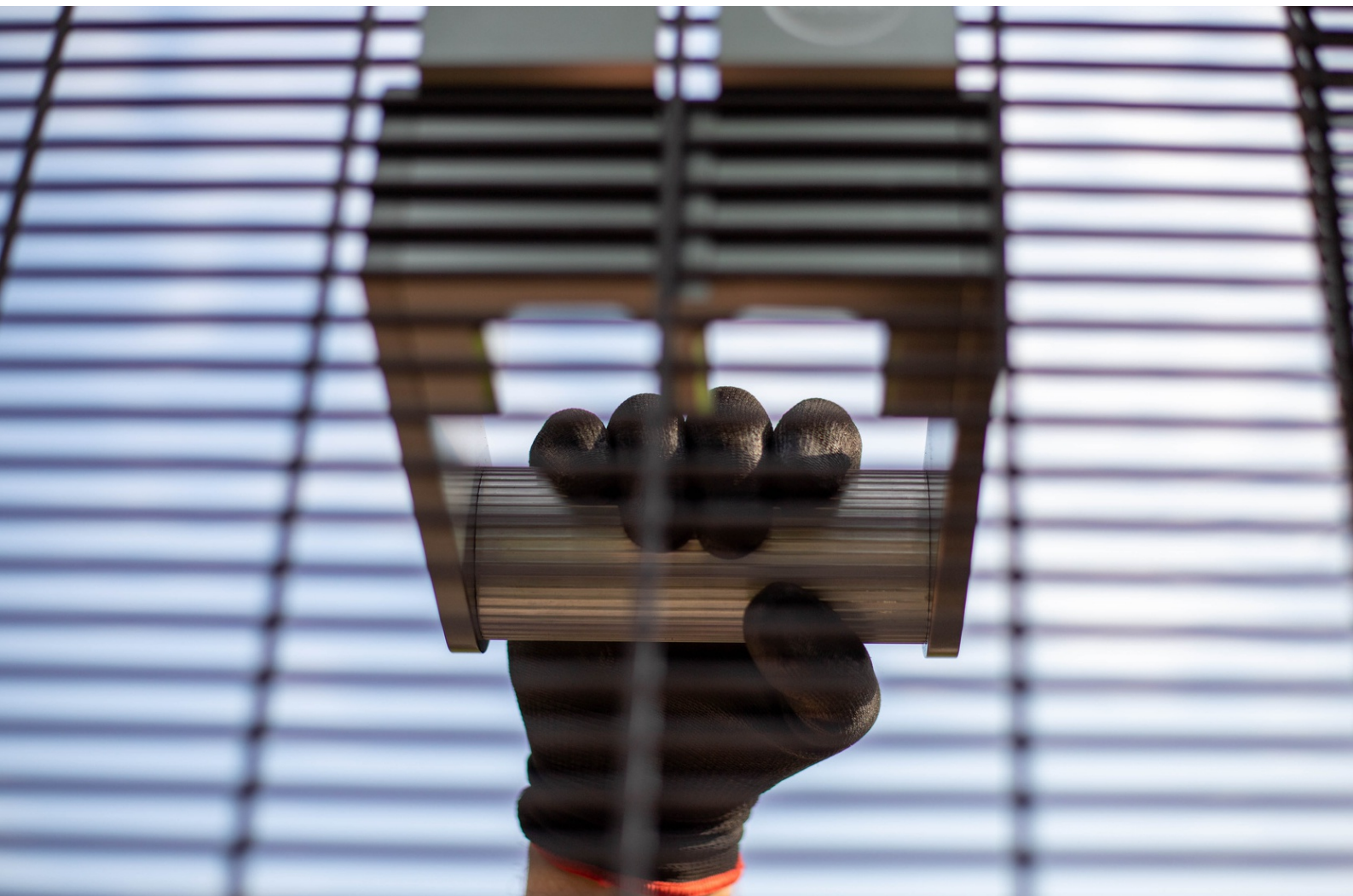


QAB MULTI-PURPOSE BRACKET

TECHNICAL INFORMATION
AND INSTRUCTIONS

This piece of equipment is not to be used for mechanical lifting.

Misuse of this product may result in physical harm, death and damage to infrastructure, always use within manufacturer's guidelines. The condition of the mesh MUST always be taken into consideration prior to using this system.



Prior to use the bracket must be inspected to ensure it is free from damage, deformation and cracks that may affect its performance, ensure all the bolts are secure

The multi-purpose bracket is designed to be used as a step and once inverted can also be used as a carrying and maneuvering aid to assist in placement and manual handling of 358 welded mesh products.

Regulations may require that fall protective equipment is utilised where the bracket is to be used to access the mesh as a step-up system.



1

Use as an access step. Offer the bracket up to the fence with the tubular step in the upper position, slide the bracket into the mesh either side of an upright wire. Rotate the bracket downwards ensuring it locates securely onto the fence without bending the mesh. (fig1)

The bracket can now be used as a step. **Single-person use. User not to exceed 120Kg**

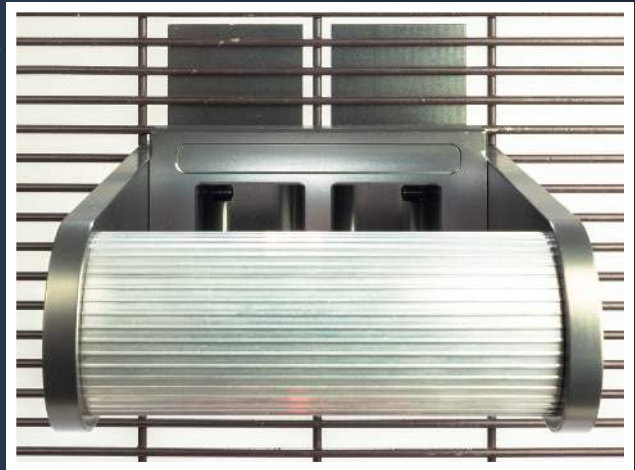
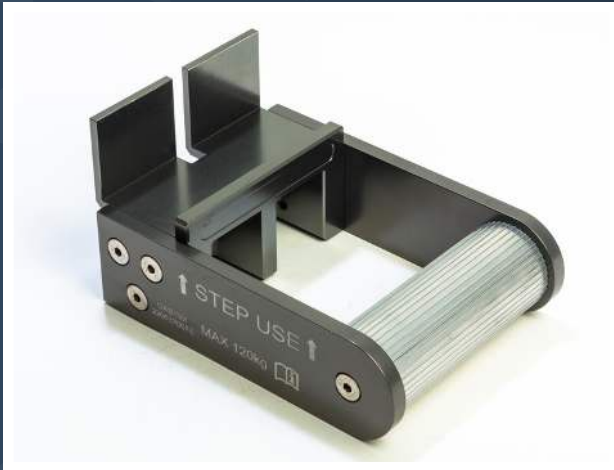


FIG2

2

Use as a manual handling lifting aid. Offer the bracket up to the fence with the tubular step in the lower position, slide the bracket into the mesh either side of an upright wire and rotate the bracket upwards ensuring it locates securely onto the fence without bending the mesh (fig2)

The bracket can now be used as a lifting aid. **Never lift beyond your capability.**



FIG2

3

Use as an alloy scaffold connector. The multi-purpose bracket may also be used to connect aluminium scaffold towers to 358 mesh fencing. The additional use of aluminium swivel scaffold brackets is required for this application. A minimum of 4 brackets and swivels will be required to connect a standard tower.

This equipment is NOT a lifting accessory and is not to be used to attach to lifting equipment.

As such it does not fall under the requirements of LOLER.





All rights reserved. Unless otherwise specified, no part of this publication may be reproduced or utilised otherwise in any form or by any means, electronic or mechanical, including photocopying or posting on the internet, without prior written permission. Permission can be obtained from the manufacturer's head office at the below address.

QAB Systems
Greenfield Farm
Helensburgh
Scotland
G84 0EH



+44 (0) 1436 810 540



enquiries@qabsystems.com



01436 810 540 | QABSYSTEMS.COM P4



WWW.QABSYSTEMS.COM